

# FALL IN LOVE

With **COLOR**



www.Directoronlyservices.com

MK

*Before*

3 X 5  
VERTICAL PHOTOS  
WORK BEST

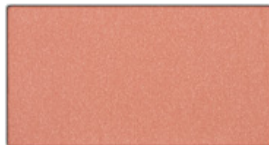
*After*

3 X 5  
VERTICAL PHOTOS  
WORK BEST

## LTD. ED.! Classic Luxury



A simple, modern look highlighted by romantic plums and naturally elegant lips.



MODEL NAME \_\_\_\_\_

OCCUPATION \_\_\_\_\_

PHONE \_\_\_\_\_ Home

\_\_\_\_\_ Work

\_\_\_\_\_ Cell

BEST TIME TO CALL \_\_\_\_\_

Email \_\_\_\_\_

### GET THIS LOOK

- Sweet Plum Mineral Eye Color
- Amethyst Eye Liner
- Shy Blush Mineral Cheek Color
- Shell Crème Lipstick
- I ♥ Black, Lash Love Mascara



HAIR COLOR \_\_\_\_\_

EYE COLOR \_\_\_\_\_

SKIN TYPE: combination ~ oily ~ dry

MY FAVORITE MARY KAY PRODUCTS

\_\_\_\_\_  
\_\_\_\_\_

*Before*

3 X 5  
VERTICAL PHOTOS  
WORK BEST

*After*

3 X 5  
VERTICAL PHOTOS  
WORK BEST

## LTD. ED.! Plum Perfection



This season, ladylike lids and plush, plum lips suit all of life's finest occasions.



### GET THIS LOOK

- Iced Cocoa Cream Eye Color
- Black Liquid Eyeliner
- Citrus Bloom Mineral Cheek Color
- Royal Plum Liquid Lip Color
- I ♥ Black, Lash Love Mascara



MODEL NAME \_\_\_\_\_

OCCUPATION \_\_\_\_\_

PHONE \_\_\_\_\_ Home

\_\_\_\_\_ Work

\_\_\_\_\_ Cell

BEST TIME TO CALL \_\_\_\_\_

Email \_\_\_\_\_

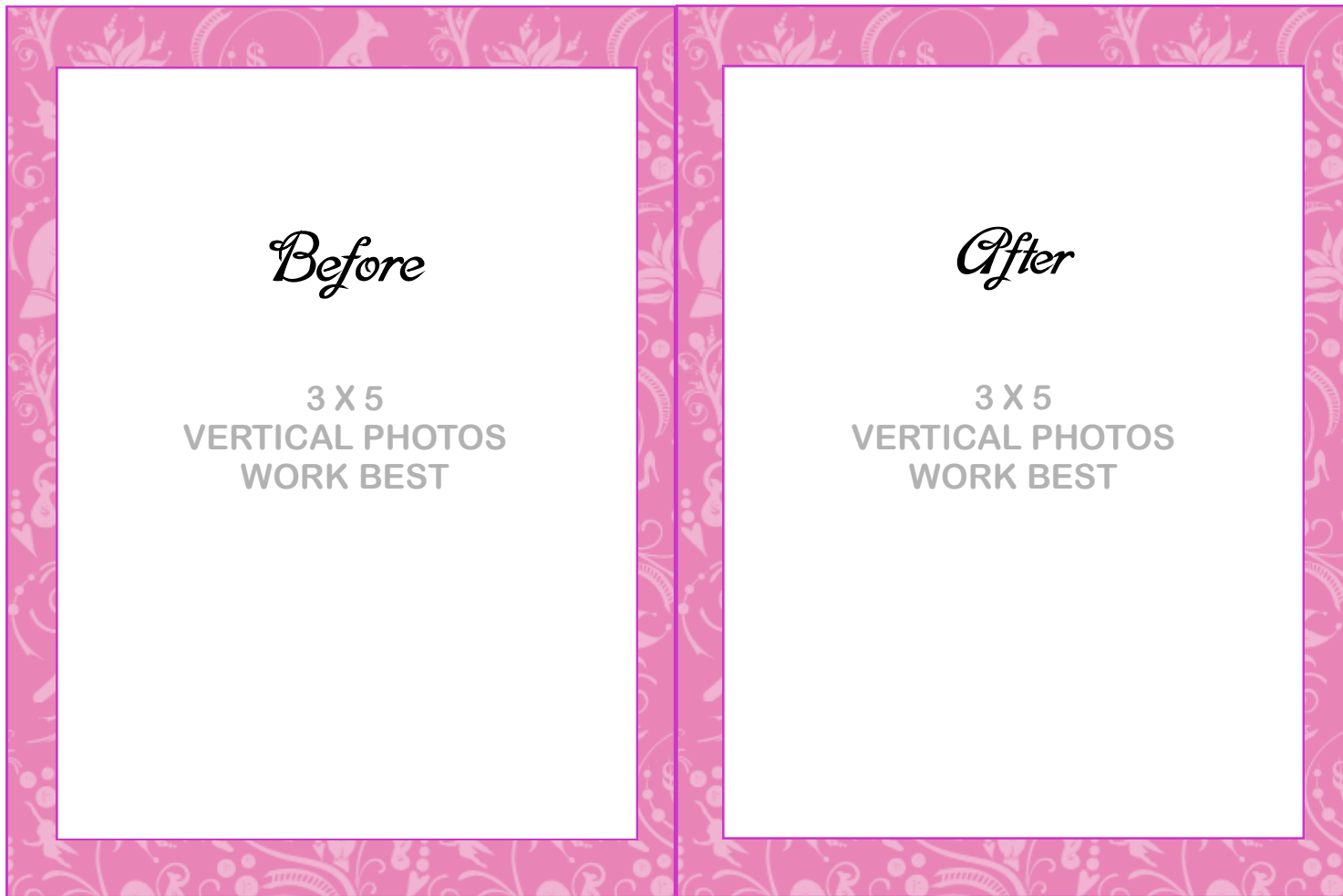
HAIR COLOR \_\_\_\_\_

EYE COLOR \_\_\_\_\_

SKIN TYPE: combination ~ oily ~ dry

MY FAVORITE MARY KAY PRODUCTS

\_\_\_\_\_  
\_\_\_\_\_



## Elegant Expression



Stunning plum updates eyes and lips to create one of the season's most elegant looks.



**EYES:** Honey Spice Eye Color  
 Chocolate Kiss Eye Color  
 Sweet Plum Eye Color  
 Bronze Eyeliner  
 I ♥ Black, Lash Love Mascara

**CHEEK:** Berry Brown Mineral Cheek Color

**LIPS:** Plum Lip Liner  
 Boysenberry Crème Lipstick  
 Sugarberry Lip Gloss



**MODEL NAME** \_\_\_\_\_

**OCCUPATION** \_\_\_\_\_

**PHONE** \_\_\_\_\_ **Home**

\_\_\_\_\_ **Work**

\_\_\_\_\_ **Cell**

**BEST TIME TO CALL** \_\_\_\_\_

**Email** \_\_\_\_\_

**HAIR COLOR** \_\_\_\_\_

**EYE COLOR** \_\_\_\_\_

**SKIN TYPE:** combination ~ oily ~ dry

**MY FAVORITE MARY KAY PRODUCTS**

\_\_\_\_\_  
 \_\_\_\_\_

*Before*

3 X 5  
VERTICAL PHOTOS  
WORK BEST

*After*

3 X 5  
VERTICAL PHOTOS  
WORK BEST

## Gilded Glow



Get this season's luxurious look with rich eye shades and polished lips.



**EYES:** Moonstone Eye Color  
Iris Eye Color  
Cinnabar Eye Color  
Deep Brown Eyeliner  
Black Ultimate Mascara

**CHEEK:** Cherry Blossom Mineral Cheek Color

**LIPS:** Dusty Pink Lip Liner  
Pink Shimmer Crème Lipstick  
Beach Bronze Lip Gloss

**MODEL NAME** \_\_\_\_\_

**OCCUPATION** \_\_\_\_\_

**PHONE** \_\_\_\_\_ Home

\_\_\_\_\_ Work

\_\_\_\_\_ Cell

**BEST TIME TO CALL** \_\_\_\_\_

**Email** \_\_\_\_\_

**HAIR COLOR** \_\_\_\_\_

**EYE COLOR** \_\_\_\_\_

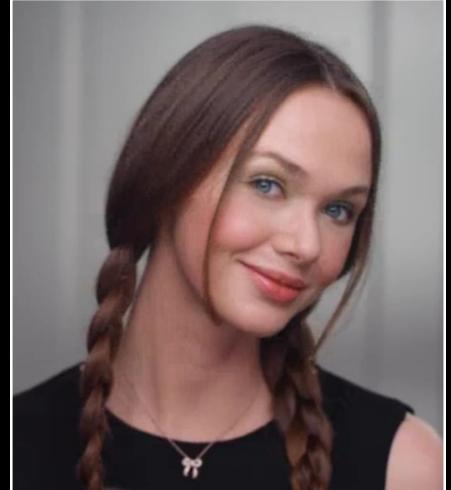
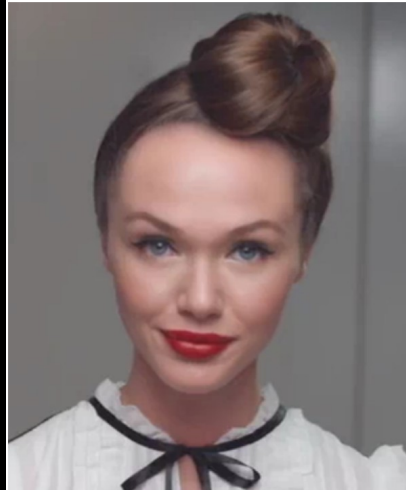
**SKIN TYPE:** combination ~ oily ~ dry

**MY FAVORITE MARY KAY PRODUCTS**

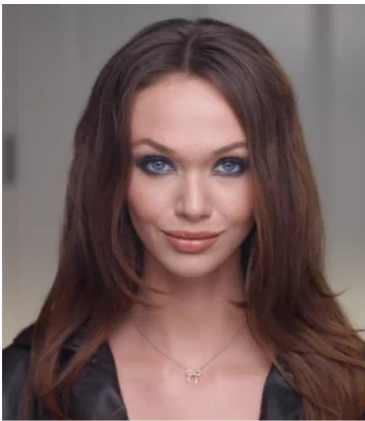
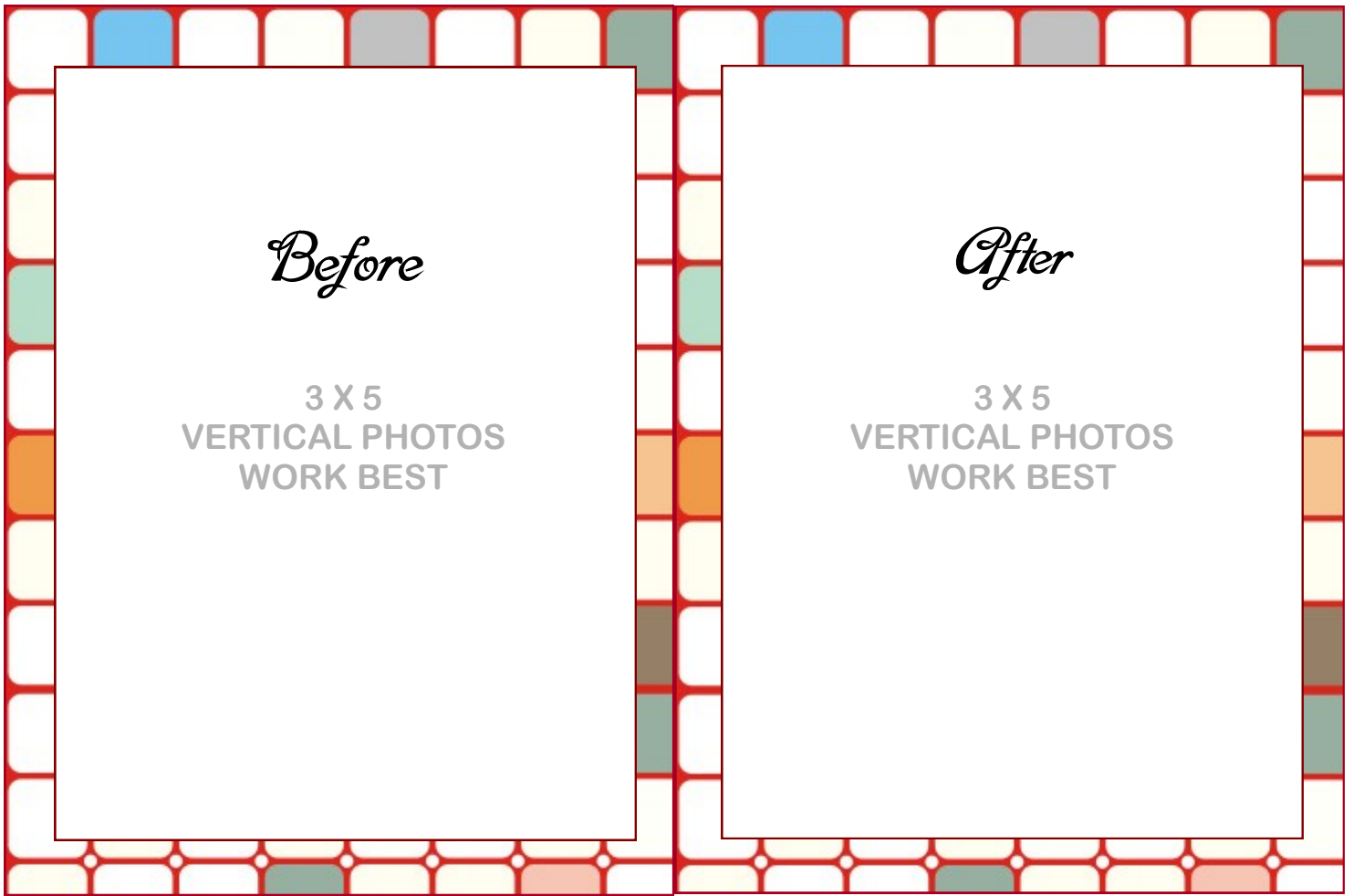


\_\_\_\_\_  
\_\_\_\_\_

# Mary Kay® Compact/Color TV Commercial Looks



MARY KAY



**LOOK #1**

**EYES:** Sweet Cream Mineral Eye Color  
 Granite Eye Mineral Color  
 Coal Eye Mineral Color  
 Black/Noir Eyeliner

**CHEEK:** Sunny Spice Cheek Color

**LIPS:** Melon Sorbet Lip Gloss

**MODEL NAME** \_\_\_\_\_

**OCCUPATION** \_\_\_\_\_

**PHONE** \_\_\_\_\_ Home  
 \_\_\_\_\_ Work  
 \_\_\_\_\_ Cell

**BEST TIME TO CALL** \_\_\_\_\_

**Email** \_\_\_\_\_

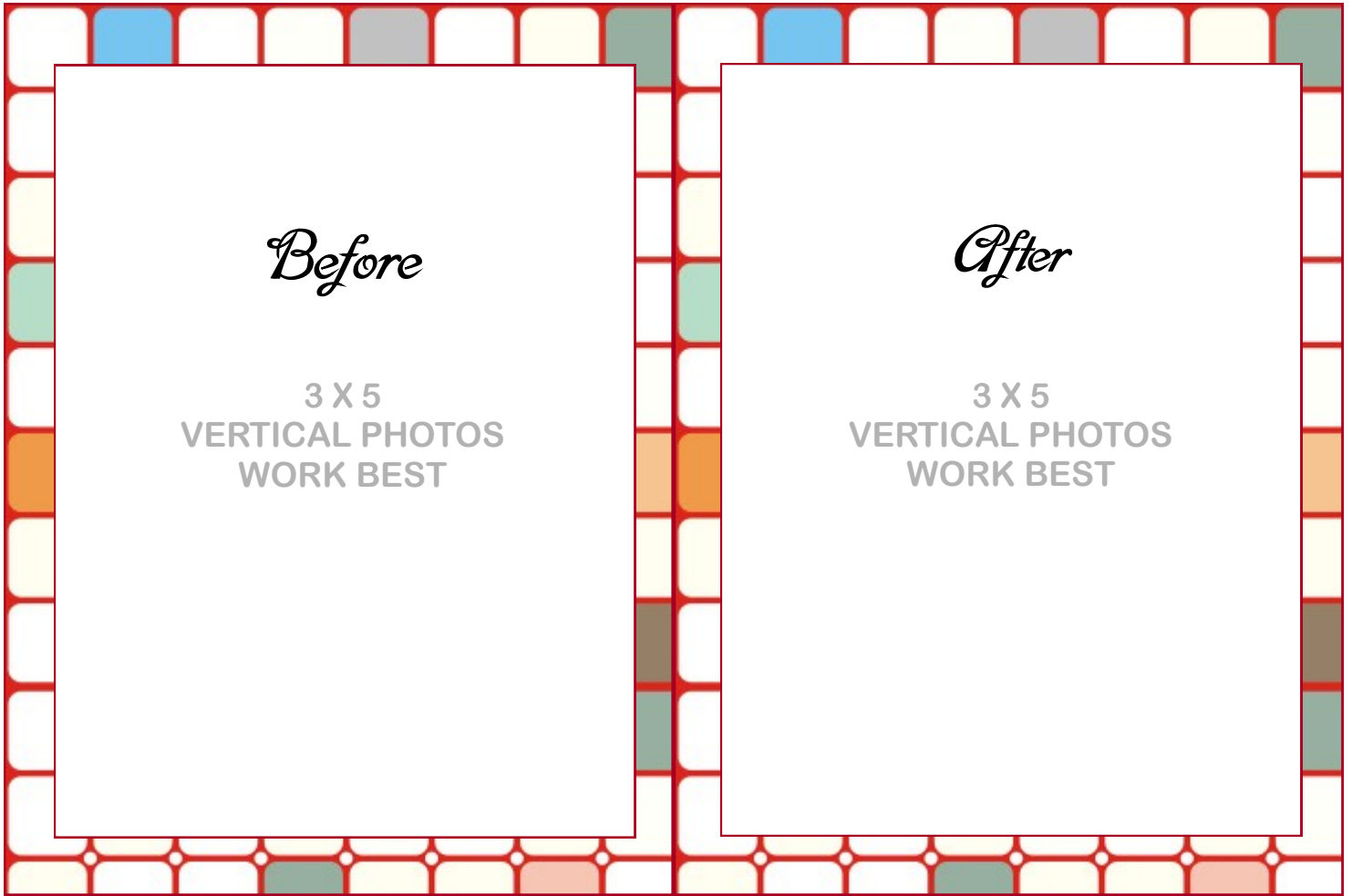
**HAIR COLOR** \_\_\_\_\_

**EYE COLOR** \_\_\_\_\_

**SKIN TYPE:** combination ~ oily ~ dry

**MY FAVORITE MARY KAY PRODUCTS**

\_\_\_\_\_  
 \_\_\_\_\_

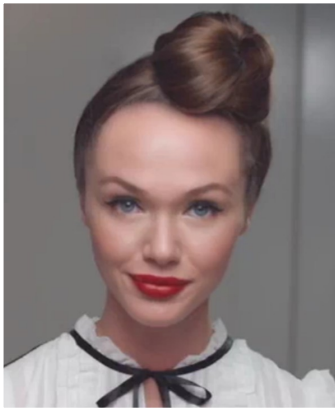


*Before*

3 X 5  
VERTICAL PHOTOS  
WORK BEST

*After*

3 X 5  
VERTICAL PHOTOS  
WORK BEST



MODEL NAME \_\_\_\_\_

OCCUPATION \_\_\_\_\_

PHONE \_\_\_\_\_ Home

\_\_\_\_\_ Work

\_\_\_\_\_ Cell

BEST TIME TO CALL \_\_\_\_\_

Email \_\_\_\_\_

**LOOK #2**

**EYES:** Silky Caramel Mineral Eye Color  
Honey Spice Mineral Eye Color  
Amber Blaze Mineral Eye Color  
Black/Noir Eyeliner

**CHEEK:** Shy Blush Mineral Cheek Color

**LIPS:** Red Lipstick



HAIR COLOR \_\_\_\_\_

EYE COLOR \_\_\_\_\_

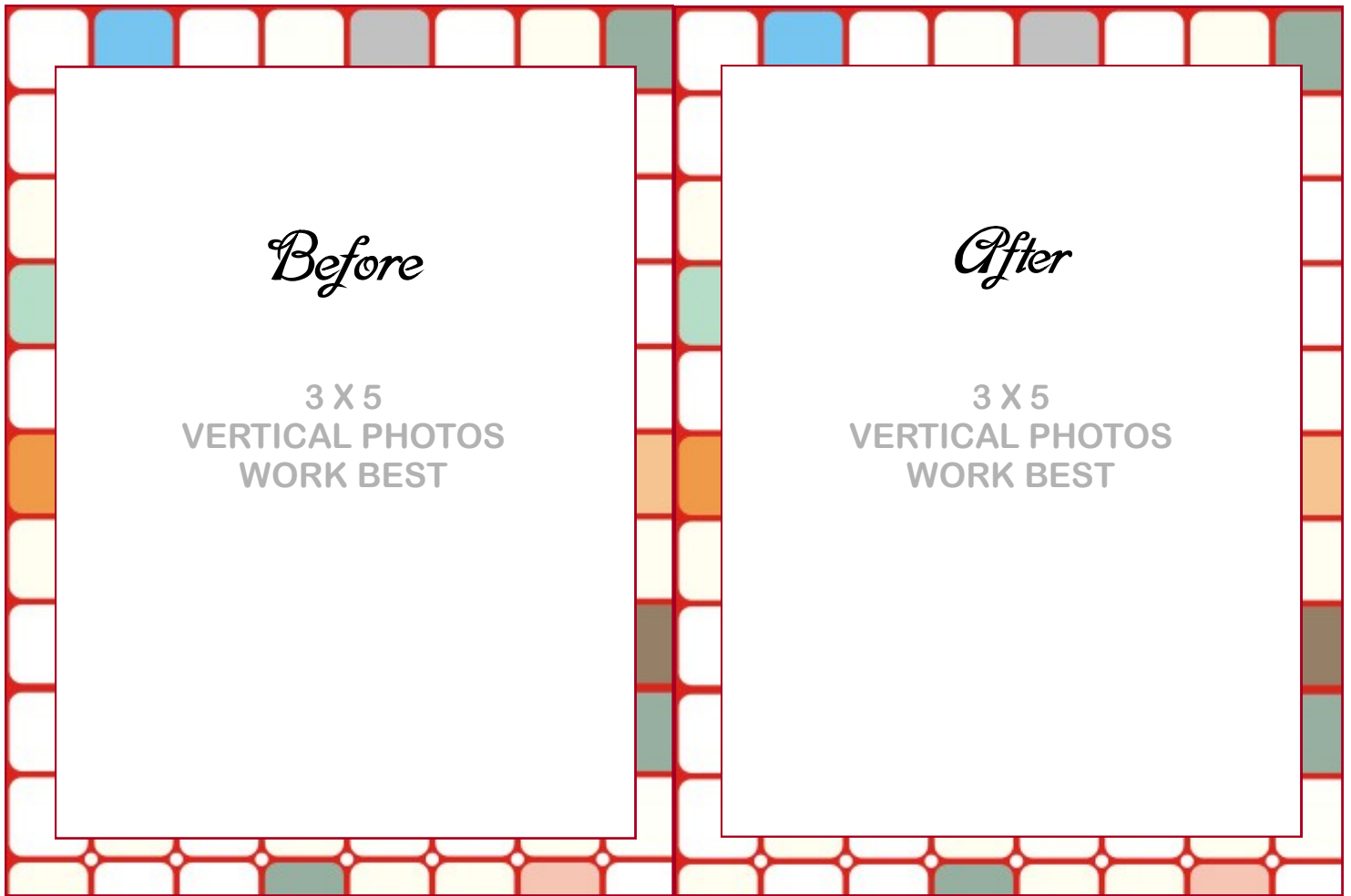
**SKIN TYPE:** combination ~ oily ~ dry

**MY FAVORITE MARY KAY PRODUCTS**

\_\_\_\_\_

\_\_\_\_\_





*Before*

3 X 5  
VERTICAL PHOTOS  
WORK BEST

*After*

3 X 5  
VERTICAL PHOTOS  
WORK BEST



MODEL NAME \_\_\_\_\_

OCCUPATION \_\_\_\_\_

PHONE \_\_\_\_\_ Home  
 \_\_\_\_\_ Work  
 \_\_\_\_\_ Cell

BEST TIME TO CALL \_\_\_\_\_

Email \_\_\_\_\_

HAIR COLOR \_\_\_\_\_

EYE COLOR \_\_\_\_\_

SKIN TYPE: combination ~ oily ~ dry

MY FAVORITE MARY KAY PRODUCTS

\_\_\_\_\_  
 \_\_\_\_\_

**LOOK #3**

**EYES:** Spun Silk Mineral Eye Color  
 Lemon Grass Mineral Eye Color  
 Ivy Garden Mineral Eye Color

**CHEEK:** Citrus Bloom Mineral Cheek Color

**LIPS:** Dusty Rose Crème Lipstick  
 Pink Diamonds Lip Gloss



# Color 101 Portfolio—Information Sheet

<u>Customer Name</u>	<u>Phone</u>	<u>Email</u>	<u>Appointment Date</u>	<u>Color Preferences</u>
1				
2				
3				
4				
5				
6				
7				
8				
9				
10				
11				
12				
13				
14				
15				
16				
17				
18				
19				
20				
21				
22				
23				
24				
25				